

# Order supplies

Ordering replacement toner cartridges can be done quickly and efficiently using the Brother Order Supplies service.

Order Supplies provides a time and cost-effective way for system administrators or service partners to provide Brother genuine supplies.

Orders are made directly from the menu of the Brother device\* and then emailed to the system administrator or preferred service partner. This service allows the ordering of the correct toner cartridges as and when they're required.



## More efficient

Only order supplies when they are running low



## Space saving

Remove the need for storage space



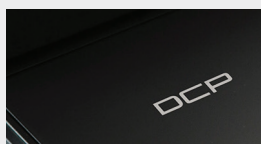
## Centralised support

Simplify IT support without 3rd party inclusion

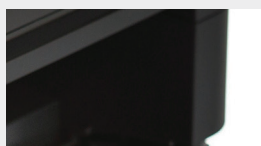
The Order Supplies service provides businesses with the ability to streamline the fulfilment of Brother original supplies and meets the need when a fully managed print service is not an option.

\*Network connection required

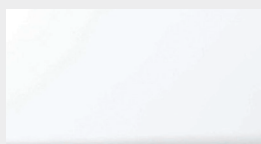
## Order supplies in 3 simple steps:



1. Select Order Supplies



2. Enter quantity



3. Request sent to your service provider

## Available on selected Brother solutions-enabled printers:

MFC-J5945DW	MFC-L6900DW(T)
MFC-J6945DW	DCP-L8410CDW
MFC-J6947DW	MFC-L8690CDW
DCP-L5500DN	MFC-L8900CDW
DCP-L6600DW	MFC-L9570CDW(T)
MFC-L5700DN	
MFC-L6800DW(T)	
MFC-L5750DW	

To activate print- and scanner Light Solutions and for updated list of Light Solutions and their compatible models, visit: <https://www.brother.fi/business-solutions/solutions-activation>